

PLAN VIEW

ASSEMBLY OF CAP

 ALL PARTS MAY BE USED EITHER AS SHOWN OR UPSIDE DOWN, AS REQUIRED, TO GIVE THE DESIRED FIXING CENTRES. THIS TO BE DETERMINED AT SITE DURING ERECTION.

TOP VIEW

FRONT VIEW

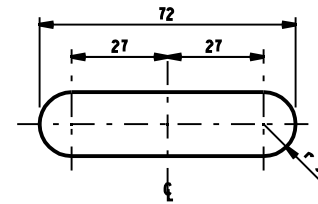
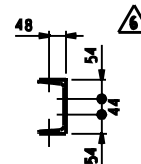
BOTTOM VIEW

MK  4 - OFF REQD.

BOLT SCHEDULE (STRENGTH GRADE 4.8)				
MR	DIA	LENGTH	No OFF	WASHER/BOLT
1	M 16	45	4	2 BEVELLED
2	M 16	40	8	1 FLAT

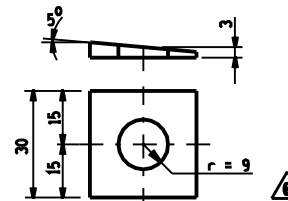
BOLTS NOTE: ALL BOLTS TO BE GALVANISED.

MASS IN kg		
STRUCTURE	BOLTS	TOTAL
55	2	57



HOLE - DETAIL 'X'

SCALE 1 : 1




SPECIAL TAPERED STEEL HARDENED WASHER REQUIRED WHERE EQUIPMENT MANUFACTURER SPECIFY M16 FIXING BOLTS. FOR NUMBER OFF, REFER TO EQUIPMENT LAYOUT.

SPECIAL WASHER.

NOTES

1. ALL STEELWORK TO BE HOT DIP GALVANISED TO S.A.B.S. ISO 1461.
2. ALL MARKS TO BE STAMPED ONTO STEELWORK AND SHALL BE CLEARLY LEGIBLE AFTER GALVANISING.
3. ALL STEELWORK FABRICATED, ERECTED AND LEVELLED TO A TOLERANCE OF $\pm 1.5\text{mm}$.
4. ALL HOLES $\phi 18$ UNLESS OTHERWISE STATED.
5. ALL BOLTS SECURING EQUIPMENT TO THIS STRUCTURE TO BE SUPPLIED BY EQUIPMENT CONTRACTOR.

6	D.J.C.S.	13.8.80	SPL. WASHER'S RADIUS AND IN 30° & BOLT SCHEDULE REVISD	P.W.D.	D.J.C.S.		
5	R.J.C.	27.8.80	SPECIAL WASHER DIMENSION CHANGED	M.M.	DBN	0.00/1980	SMALL EQUIP. SUPP.
4		28.8.80	SPECIAL WASHER ADDED & NOTES REVISD.	A.D.	J.H.	297	CAP "M4" M20 P.C.D.
3	R.J.C.	30.8.80	HOLES TO FIT SMALL EQUIPMENT SUPPORT ADDED.	M.B.P.	L.R.	298	CAP "M3" M16 P.C.D.
2	A.C.B.	25.8.80	REDRAWN ON CAD, BOLTS & NOTES REVISD.	V.P.H.	J.O.S.	307	CAP "M2" M20
1	R.D.M.	28.8.80	18 DIA HOLE ADDED TO IT, 30MM	A.J.R.		305	MED. SUPP. 4000 HIGH
0			FIRST ISSUE / EENSTE UITREIKING			304	MED. SUPP. 3500 HIGH
						303	MED. SUPP. 3000 HIGH
						302	MED. SUPP. 2500 HIGH
						301	MED. SUPP. 2000 HIGH
REV	AUTH MAG	DATE DATUM	REVISION/PREVIJES INDEX REF/VERIJSYEM	BY DEUR	CHD NAGES	0.54/-	REFERENCE DRAWINGS VERWYSINGSTEKENINGE
QUALITY REGISTER							
CHD NAGES							
DRAWN GETEKEN	T.H.	11.7.1973					
SCALE SKAAL	1 : 10						

SOUTH AFRICA		ESCON • EYKOM	
		SMALL/MEDIUM EQUIPMENT SUPPORT	
SUID AFRIKA		CAP "M1" ADJUSTABLE FIXING CENTRES	
100 TO 706 ± 100 TO 706		M16 FIXINGS	
APPROVED	GOEDGEUR	0.54/306	
	P. PEARCE		
	11.7.73		
		REV	
		6	

THIS DRAWING HAS BEEN CREATED
ON C.A.D. SYSTEM AND ANY
AMENDMENT TO THE DRAWING
MUST BE EFFECTED ONLY
ON THE SAME C.A.D. SYSTEM

THE C.A.D. REFERENCE NUMBER IS:
05A11100,164 100306L000.R03

WAS 0.00/8106